



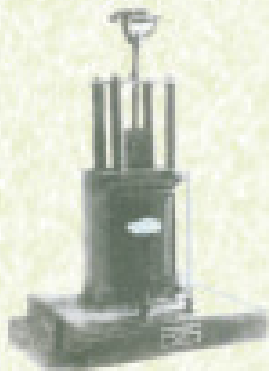
Single Phase Resistive Load

RESISTIVE LOADS

- Resistive load (loading Rheostat) air cooled.
- Suitable for loading of Generator Transformer & for varying p.f. of the circuit.
- Fixed Resistors have low temp, co-efficient wound on porcelain pipe in vertical array.
- Loading provided by tumbler switches in steps, for SINGLE PHASE.
- Loading provided by Rotary switches in steps for THREE PHASE (STAR connected).
- Housed in perforated M.S. Sheet box with Castor wheels.
- Capacity available : 2.5, 3.75, 5, 7.5 15,30,KW



3 Phase Resistive Load



**1 Phase Inductive Load.
(Choke Coil)**

INDUCTIVE LOAD (CHOKE COIL)

- Plunger type, continuously variable having screw wheel mechanism.
- Works on variation of air-gap principle.
- Laminated CRGO stamping.
- Former wound Impregnated copper coils.
- 3 Phase Choke coil STAR connected.
- Capacity available - 4A, 6A, 8A, 10A, 15A, 20A, & 25A. For Single and Three Phase.



3 Phase Inductive Load. (Choke Coil)



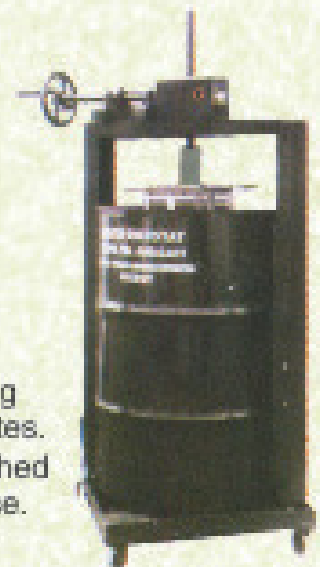
3 Phase Capacitive Load

CAPACITIVE LOAD :

- 3 Phase Capacitors, ISI marked of standard ratings.
- Variable in steps of 1.2A approx, through Rotary switch.
- Capacitors connected in Delta, fitted with self discharging Resistors.
- Housed in perforated M.S. sheet box with castor wheels.
- Capacity available : 5, 10, 15 AMR

WATER LOAD

- Anti Corrosive high tensile plastic rubber tank fitted on trolley with castor wheels.
- Lead screw lifting arrangement for increasing /decreasing wetting surface of electrode plates.
- Two/Three copper electrodes cadmium finished as ANODEs, insulated for Single/three phase.
- Capacity : 1 OA, 20A, 25A & 50A.



**Water Rheostat
(Single Drum Type)**