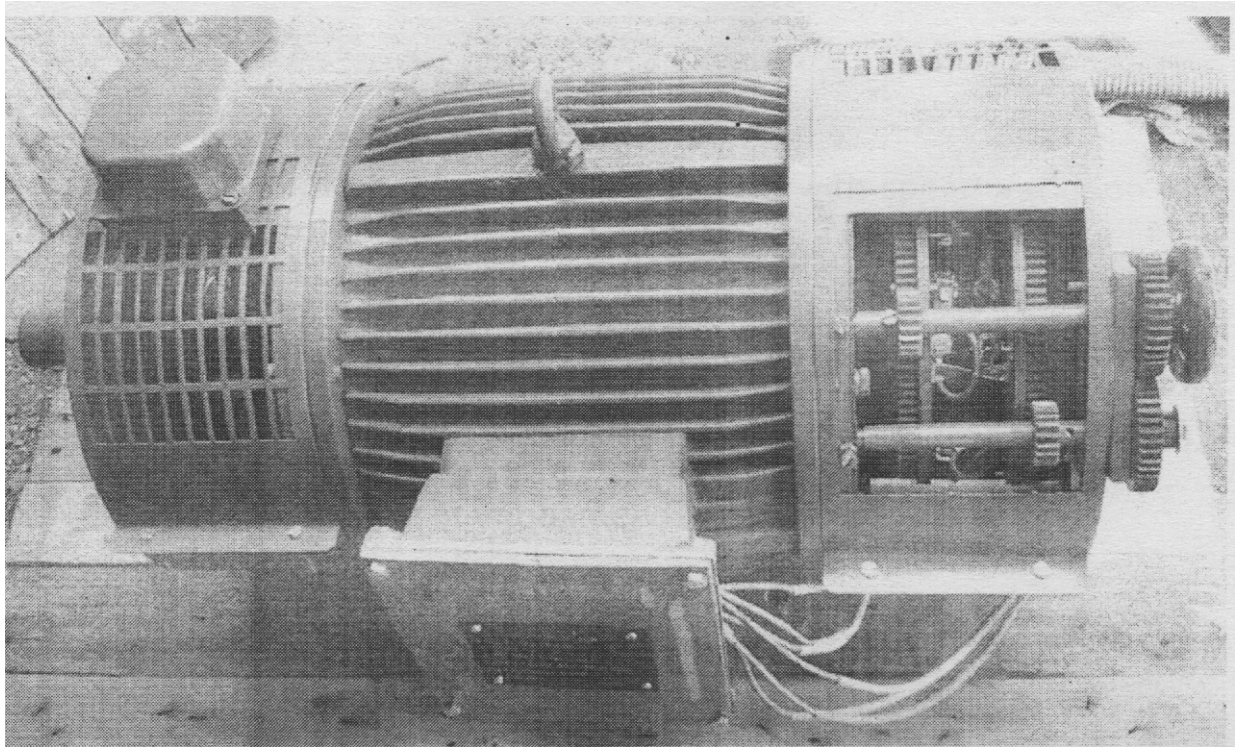


Premier

Scharge Motor

with control panel of 3 HP AC motor
for speed control and pf control
with brake loading



A Laboratory type model for conducting various experiments.

SPECIFICATIONS :

Scharge Motor 5 HP, 3 Phase 440 V, 50 Hz 12A with Speed Variation 650-1400 rpm and p.f. variation 0.6 lag to lead facilities with control panel having all necessary diagrams

CONTROL PANEL :

Box Type Control Panel size 900 mm(W) x 600 mm(H) x 250 mm(D) to be made out of 20 SWG M.S. Sheet. Back side in form of hinged door with suitable locking arrangement. Two sides of panel board perforated for air ventilation circuit diagram of panel wiring provided inside the panel board. The panel board is mounted on m.s. angle stand 900 mm(W) x 1000 mm(H) x 250 mm(D) Angle Size : 35 x 35 x 3 mm.

All meters in 96 x 96 mm size panel mounted / max. accuracy type with starter and 30 A. Educational type bakelite insulated brass terminals heavy duty provided on the panel board made of Hylem Sheet (Backelite) for motor supply connection.

BASE PLATE :

Motors mounted on fabricated base plate of M.S. 'C' Chanel 75 x 40 x 6 mm thick

PAINT : Motor Painted with two coats of smoke grey oil paint, panel board powder coated.